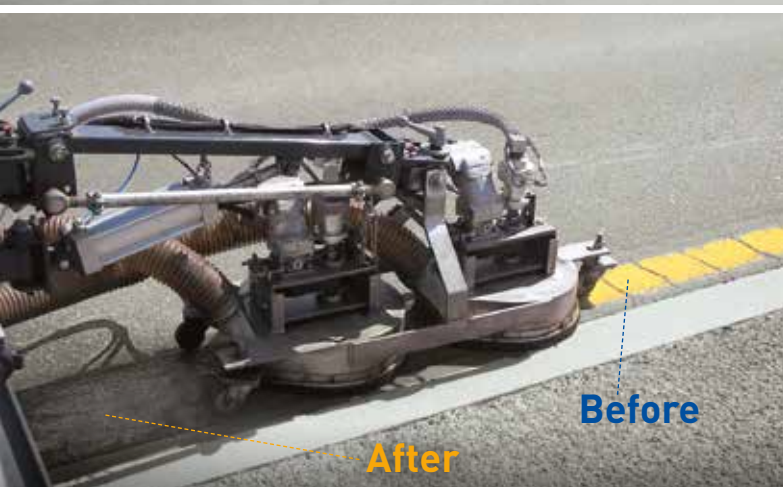


# MRT 300/2



## ROAD MARKING REMOVAL



The MRT 300/2 can be used professionally for all demarking applications.

### AVERAGE CLEANING RESULTS:

Demarking of traffic lines as

➤ Thermoplastics	Ø 1,500 m/h
➤ Coldplastics	Ø 800 m/h
➤ Paint	Ø 3,500 m/h

## TECHNICAL DATA

### Controls and settings from driver's cabin

- Monitor for the 2 cameras mounted behind the surface cleaner and the rear side of the truck
- RPM counter for the rotating speed of the surface cleaner
- Pressure gauge for the working pressure
- Joystick for forward and reverse movement
- Potentiometer to set the driving speed during operation
- Setting of the rotation speed of every surface cleaner (rpm)
- Setting of the suction operation (rpm of the blower)
- Setting of the working pressure (1,000 to 2,500 bar)
- Control for all hydraulic circuits
- Pressure gauge for booster pressure
- Control of water temperature
- Control of water level



MRT 300/2 in operation in Dubai



Removal device in front of the truck in lifted position



Easy access to all aggregates for services, when vessel is tipped upwards.

Removal device in transport position

## TECHNICAL PARAMETERS

### CHASSIS

2-axles chassis

### ULTRA-HIGH-PRESSURE PUMP

140 kW, P max 2,500/3,000 bar

Q max 29 l/min

### SPEED DURING OPERATION

3 to 80 m/min, stepless adjustable

### MAX. WORKING WIDTH

150 – 360 mm, (OPTIONAL – additional demarking device on one side)

### SUCTION / AIR BLOWER

16,800 m<sup>3</sup>/h, free air flow and - 0.15 bar

### ROTATION OF NOZZLES

0-2,500 RPM, stepless adjustable

### TANK VOLUME

9 m<sup>3</sup>

The removal of road markings (lines and/or traffic signs) by means of high-pressure water is becoming increasingly popular worldwide. The distance with our systems guarantees that no height profile is milled into the road surface. Our method is gentle and fast.

**The models MRT 300/2 and 300/1 differ only in the size of the tanks and the chassis (2- or 3-axle).**

The marking removal device is mounted at the front of the vehicle. This can be moved over the entire width of the vehicle and swing out

additionally thus it can be worked in the ongoing traffic and on the right as well as left of the track.



Small inaccessible areas can be handled with the hand cleaner MCD 360 (optional).